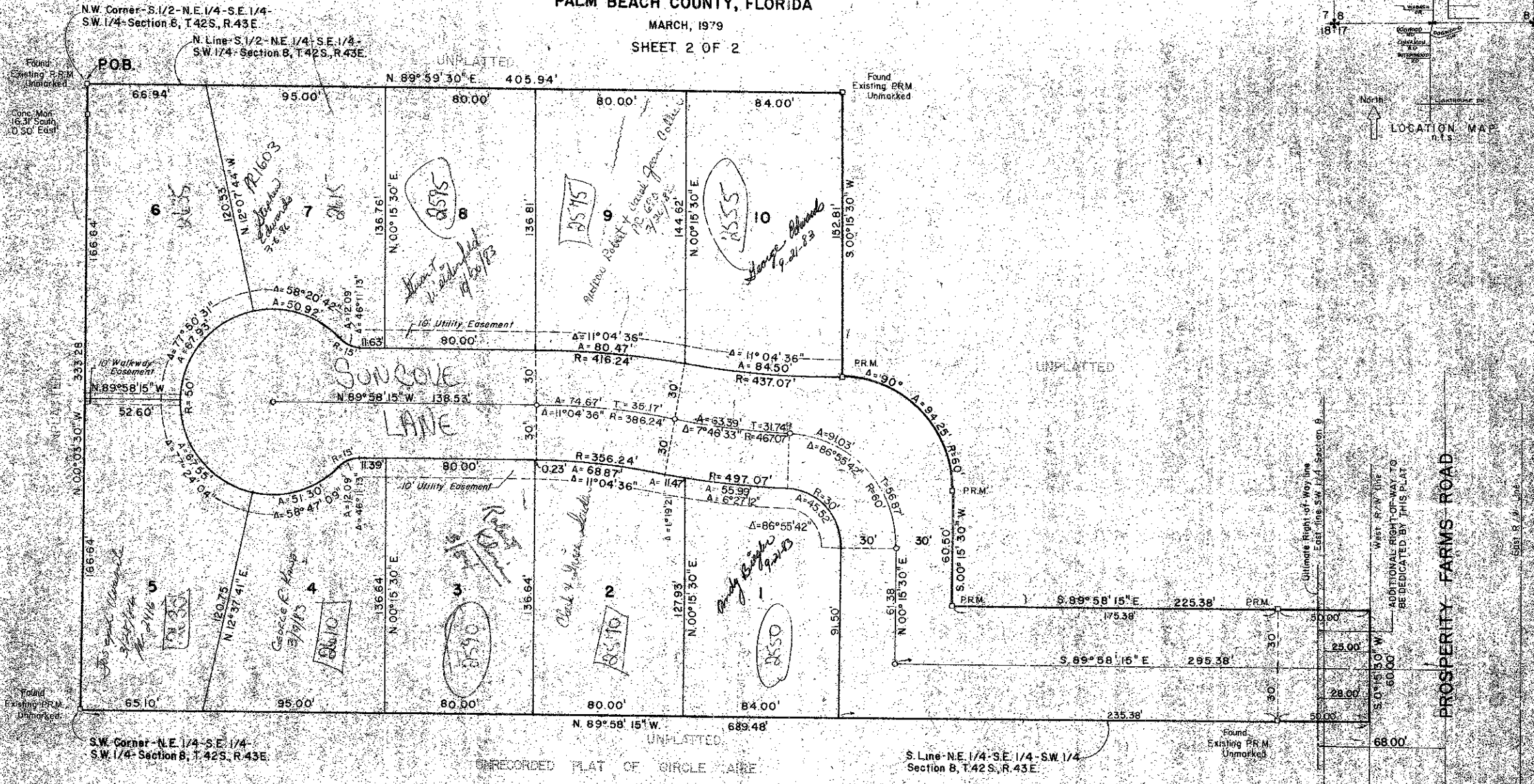
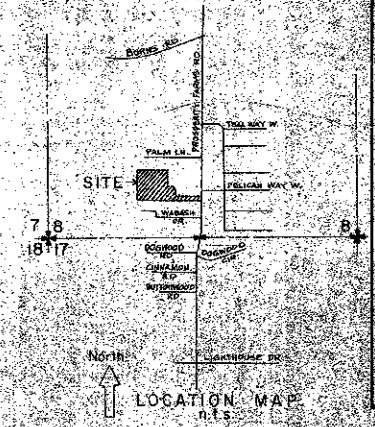


39-34

PLAT OF
SUN COVE
 IN THE SOUTH ONE HALF OF SECTION 8,
 TOWNSHIP 42 SOUTH, RANGE 43 EAST,
 PALM BEACH COUNTY, FLORIDA

"B" Flood Zone

MARCH, 1979
SHEET 2 OF 2



- Notes
1. Permanent reference monuments denoted thus: □
 2. Permanent control points denoted thus: ○
 3. There shall be no buildings or other structures placed on utility or drainage easements.
 4. There shall be no trees or other shrub placed in utility or drainage easements which will interfere with the construction, maintenance or operation of drainage and utility facilities.

1000-051

Handwritten notes:
 1500
 1500
 1500
 1500

39/34

Tripod Enterprises Inc.
 422 W. FLEMING ROAD, WEST PALM BEACH, FLA.
 TEL. 555-1888